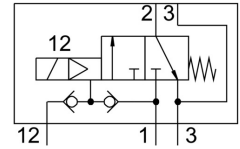
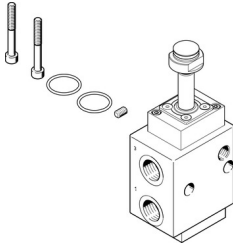


Pneumatic valve VOFC-LT-M32C-MC-FG13-F19

Part number: 4527268

FESTO



Data sheet

Feature	Value
Valve function	3/2, closed, monostable
Actuation type	Electrical
Width	51 mm
Standard nominal flow rate	2108 l/min
Pneumatic working port	Sub-base G1/2
Operating pressure	0.2 MPa ... 0.8 MPa
Operating pressure	2 bar ... 8 bar
Structural design	Pilot-controlled piston poppet valve
Reset method	Mechanical spring
Degree of protection	IP65
Certificate issuing authority	German Technical Control Board (TÜV) V496.01/16
Nominal width	12 mm
Type code	VOFC
Sealing principle	Hard
Mounting position	Any
Manual override	None
Type of control	Pilot-controlled
Pilot air supply port	External Internal
Flow direction	Non-reversible
Symbol	00995569
Safety function	Safe venting
Safety integrity level (SIL)	Up to SIL 3 high demand mode Up to SIL 3 low demand mode
Information on operating pressure	0 - 0.8 MPa with ext. pilot air
Flow rate for piston valve pressurization	1.93 m ³ /h
Flow rate for piston valve exhausting	3.07 m ³ /h
Standard nominal flow rate 2-3	3353 l/min
Switching time off	14 ms
On switching time	25 ms
Explosion prevention and protection	Zone 1 (ATEX) Zone 2 (ATEX) Zone 21 (ATEX) Zone 22 (ATEX)
Operating medium	Compressed air as per ISO 8573-1:2010 [7:-:-]
Corrosion resistance class (CRC)	4 - Particularly high corrosion stress

Feature	Value
Temperature of medium	-25 °C ... 60 °C
Ambient temperature	-25 °C ... 60 °C
Product weight	900 g
Pneumatic connection 1	G1/2
Pneumatic connection 2	Flange 1/2 NAMUR connection diagram
Pneumatic connection 3	G1/2
Note on materials	Contains paint-wetting impairment substances RoHS-compliant
Seals material	NBR
Housing material	Aluminum, ematal coated